

Dept. of Cell Bio & MCD²

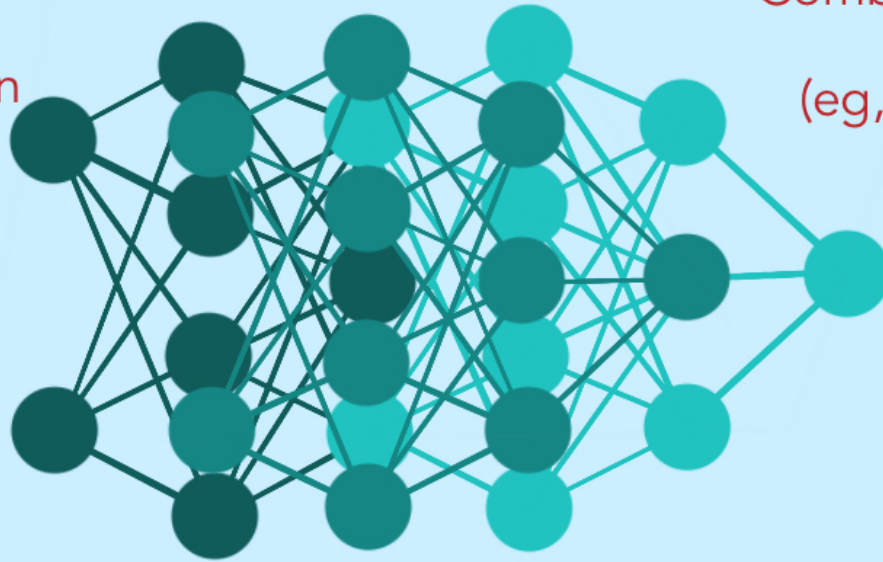
Nanocourse Announcement:

Deep Learning for Biomedical Image Analysis

Faisal Mahmood, Ph.D. *Division of Computational Pathology*

Methods for
segmentation
& classification

Combining multiple
data sources
(eg, microscopy &
genomics)



Possibilities,
current
limitations, &
challenges

Automated
analysis &
knowledge
discovery

Advances in the AI method of deep learning have the potential to transform how biomedical data is analyzed for research, clinical diagnosis, and prognosis. This nanocourse will deliver information and allot guided practice so that you can apply the principles and algorithms of deep learning to process and analyze your own biomedical images using this advanced technology.

ALL WELCOME:

Feb 11 from 2-4pm

Feb 12 from 2-4pm

Feb 13 from 2-4pm

REGISTRATION REQUIRED:

Feb 21 from 2-4pm

You can register (you MUST register if you plan to attend day 4) at:
CurriculumFellows.HMS.Harvard.edu/classes

